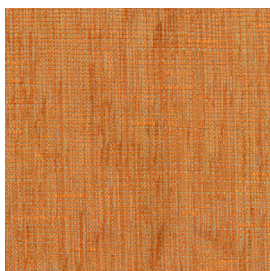


Finishes - Fabric.

Please refer to a physical sample.
Colours are for an indicative reference only.
Actual colour and finish may vary slightly.

Warwick - Flynn



Mandarin



Flame



Chili



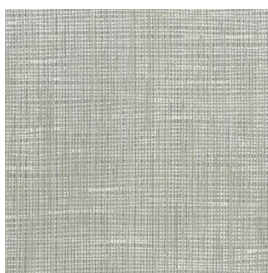
Fuchsia



Orchid



Eggplant



Natural



Sand



Dune



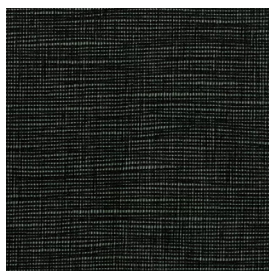
Mushroom



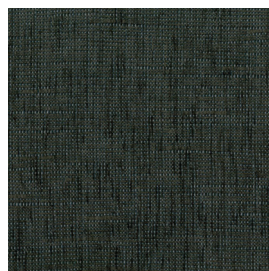
Bark



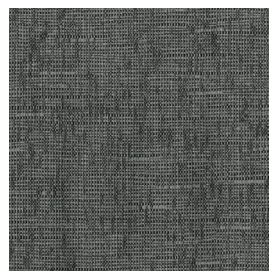
Mocha



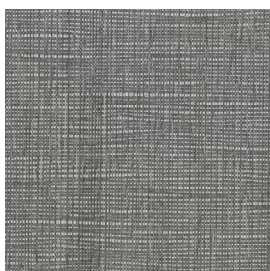
Onyx



Asphalt



Storm



Steel



Silver



Denim



Navy



Duckegg

Watts Commercial Furniture

350a Edgar St
Bankstown NSW 2200
PO Box 275 Condell Park 2200
ABN: 54 064 557 893

p: 02 9771 3966
wcf.com.au
sales.watts@wcf.com.au
accounts.watts@wcf.com.au

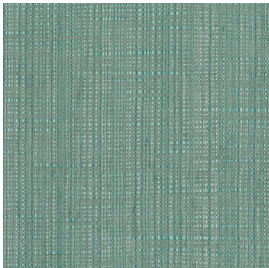
Watts Commercial Furniture reserves the right to
change any or all details without prior notice. Every
effort has been made to ensure the information is
accurate at the time of printing.

September 2024

Finishes - Fabric.

Please refer to a physical sample.
Colours are for an indicative reference only.
Actual colour and finish may vary slightly.

Warwick - Flynn



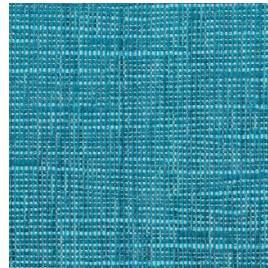
Seafoam



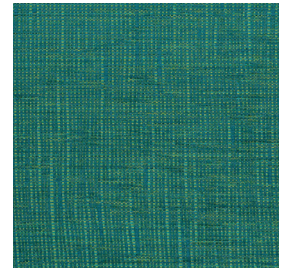
Ivy



Jungle



Ocean



Peacock



Dusk



Forest



Grass



Buttercup

Watts Commercial Furniture

350a Edgar St
Bankstown NSW 2200
PO Box 275 Condell Park 2200
ABN: 54 064 557 893

p: 02 9771 3966
wcf.com.au
sales.watts@wcf.com.au
accounts.watts@wcf.com.au

Watts Commercial Furniture reserves the right to change any or all details without prior notice. Every effort has been made to ensure the information is accurate at the time of printing.

September 2024

Warwick - Flynn.

Specifications

Specifications	
Composition	60% Polyester, 40% Acrylic
Pattern Match	No
Pattern Repeat (cm)	Plain
Railroaded	Plain
Width (cm)	137
Roll Size (approx)	50m
Weight (gsm)	315
Origin	Australian
Stain Repellent	No
FIAA Care Label	FIAA Care Label 1 - Pile Fabrics, Velvets & Chenille Wovens
Guarantee	3 Years in accordance with fabric manufacturer's product type and care instructions

Test Results	
Wyzenbeek (ASTM D3597, mesh, 4lb/3lb)	100,000 Cycles
Seam Slippage (mm) (ISO 13936-2, Load 180)	Warp 3.4, Weft 4.1
Pilling Resistance (ISO 12945-2)	5
Colourfastness to Light Xenon arc (ISO 105-B02, blue std 6)	>6
Free and Hydrolysed Formaldehyde (ISO 14184-1:1998)	Not Detectable
Flammability AS/NZS 1530.3	
Ignitability (0-20)	11
Spread of Flame (0-10)	0
Heat Involved (0-10)	2
Smoke Developed (0-10)	5
Oekotex Standard 100	005339.0 CENTROCOT